



**BrainLeftException**

For all your intergalactic journeys.

**INTRODUCING**



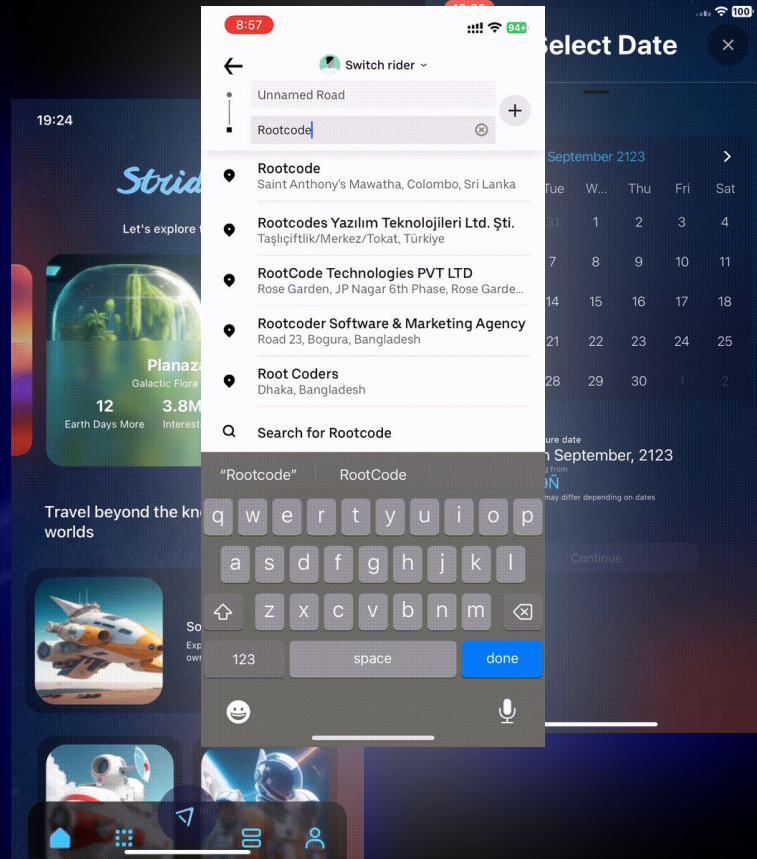
# Problem Statement

We are tasked with creating a booking process for Intergalactic's **Interplanetary travel** app as our primary focus.



What makes our solution **unique** ?

# Interactive and Immersive



So many options to choose from.....

A word cloud featuring various space-related terms. The word 'planets' is the largest and most prominent, rendered in a bright red color. Other words include 'galaxies', 'solar-systems', 'packages', 'ships', 'tickets', 'cabins', 'travel-types', 'locations', and 'dates'. The words are arranged in a scattered, organic pattern, with some overlapping. The colors of the words vary, including shades of red, orange, yellow, and light blue, creating a vibrant contrast against the dark background. A large, semi-transparent blue circle is positioned in the upper-left corner of the image.

planets

galaxies

solar-systems

packages

ships

tickets

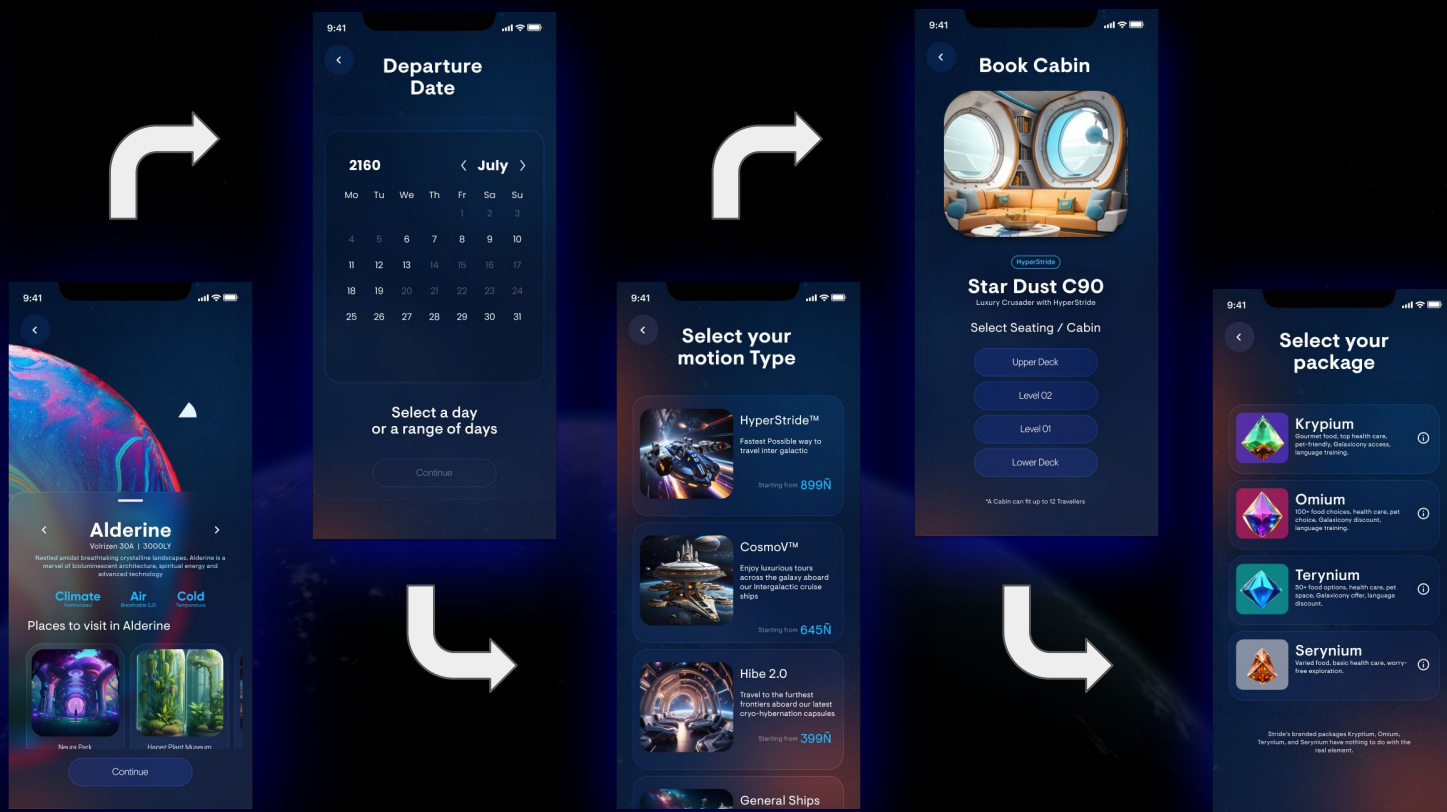
cabins

travel-types

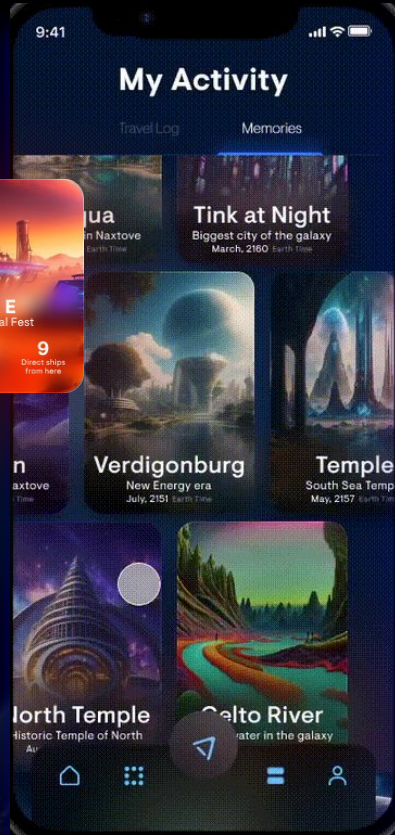
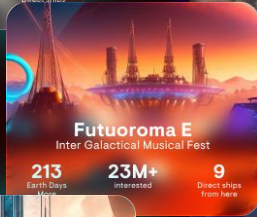
locations

dates

# Simplified and Streamlined



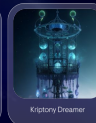
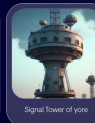
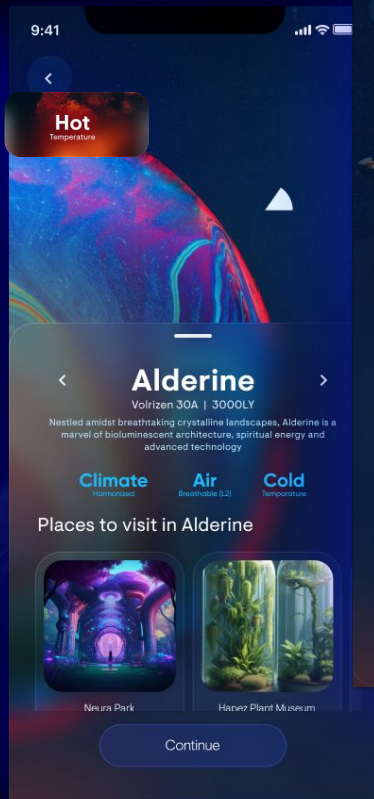




Piques User Interest  
by Highlighting,

- Ongoing Festivals
- Incredible Locations
- Tailored Travel Suggestions
- Special Offers

# All You Need to Know at Your Fingertips







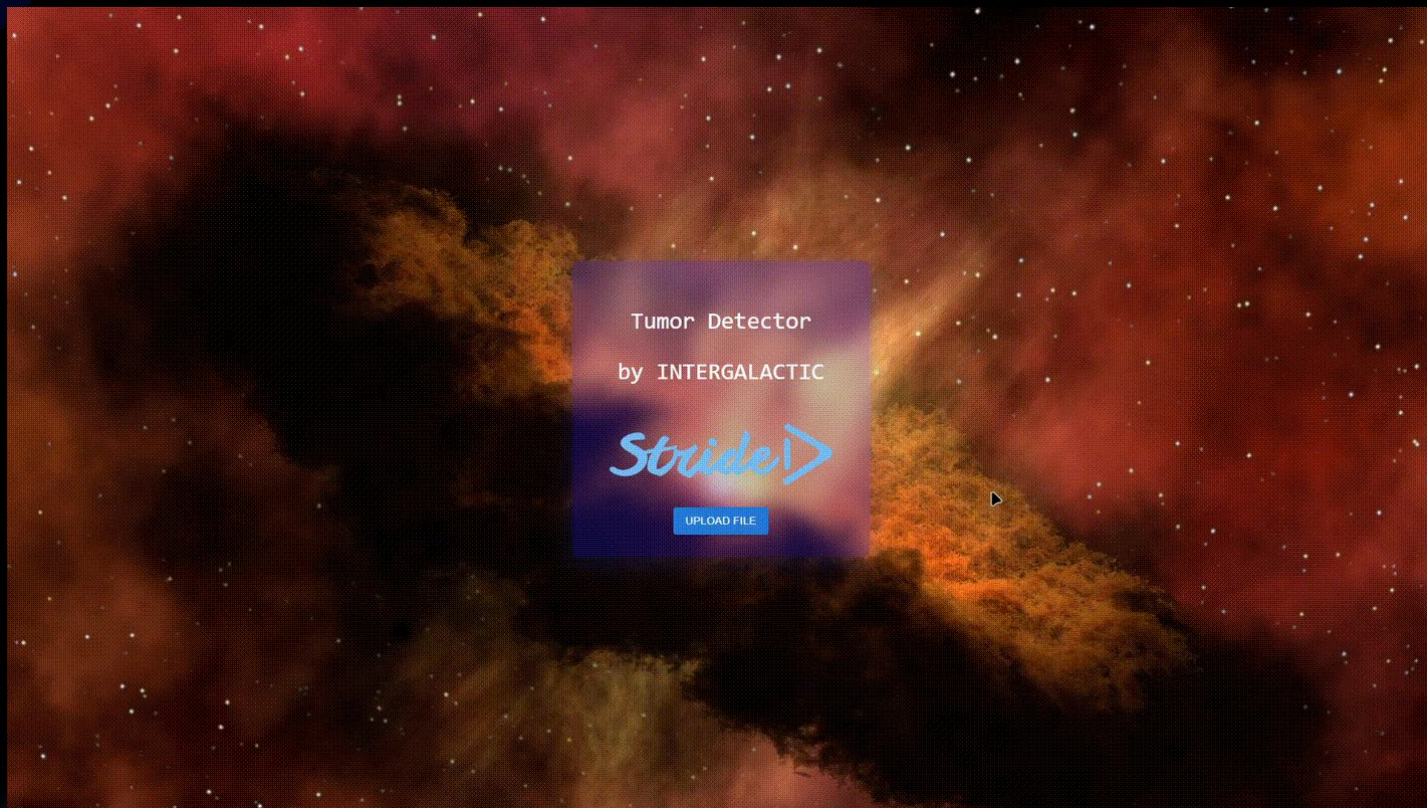
# Brain Left Exception

---

## Mind Scan

### INTRODUCING

# Our Approach

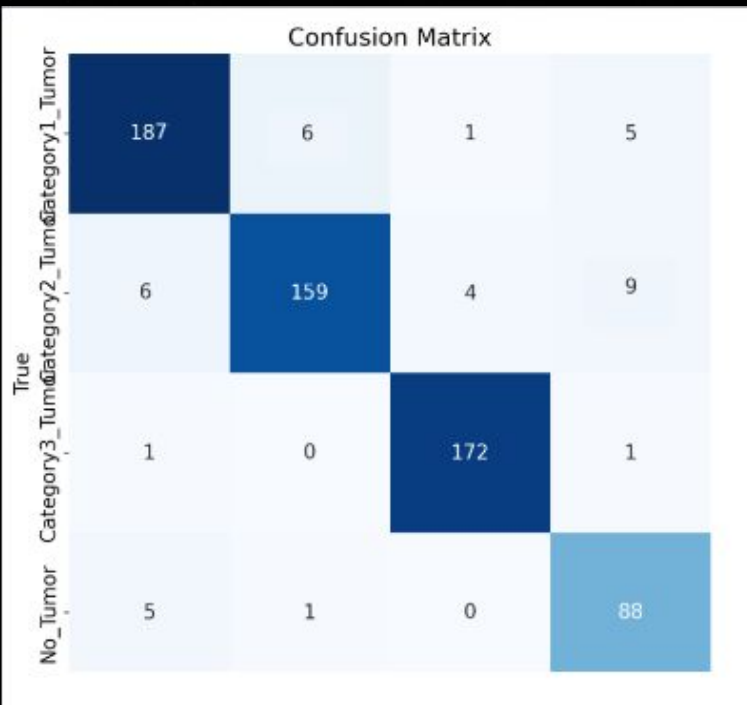


# Results and Special Notes

## Tested Model

Accuracy : 96%

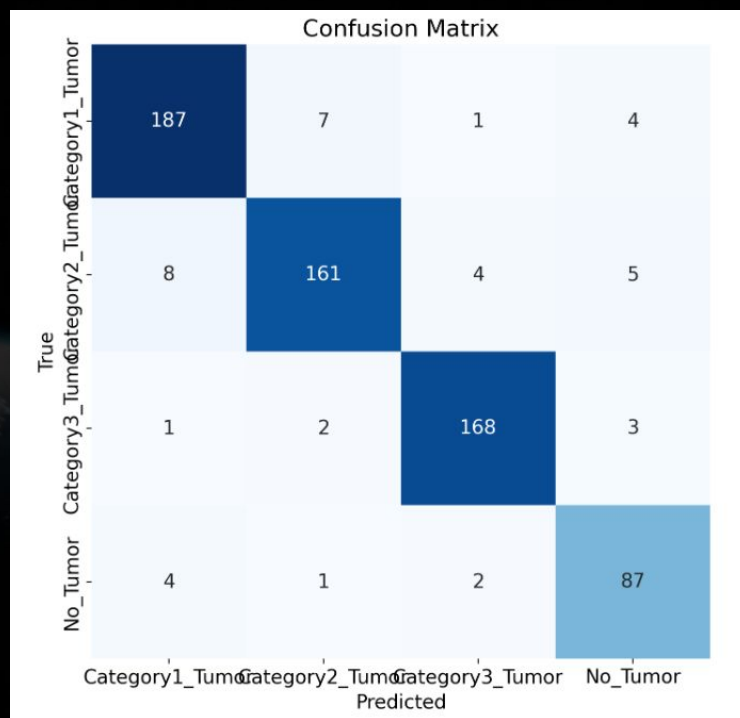
More people with tumors predicted as not having tumors



## Chosen Model

Accuracy : 94%

Less people with tumors predicted as not having tumors



# Live Learning

- Initial model trained with available data
- New cases detected by the system
- Examined and verified by the doctor
- Model updated with every 50 new records





Thank you.